

# Glade Pinelodges





Cool, uncluttered, contemporary ... this architect designed lodge has many innovative features. With high level landscape windows and stunning glazed gables; brise soleil inspired canopies and generous deck; superb bathrooms and kitchen to relaxing bedrooms - this is a lodge designed to impress.



Natural light is maximised with glazed gables and full length windows.

The open plan living area features beautiful timber detailing which draws the eye to the vaulted ceiling and exposed wooden beams.

A stylish fireplace is an uncluttered focal point and generous shelving provides well considered space for modern multi-media equipment.

In the 4-bedroom lodge you will even find a dedicated Games Room - or you could choose to use this additional space as you prefer.



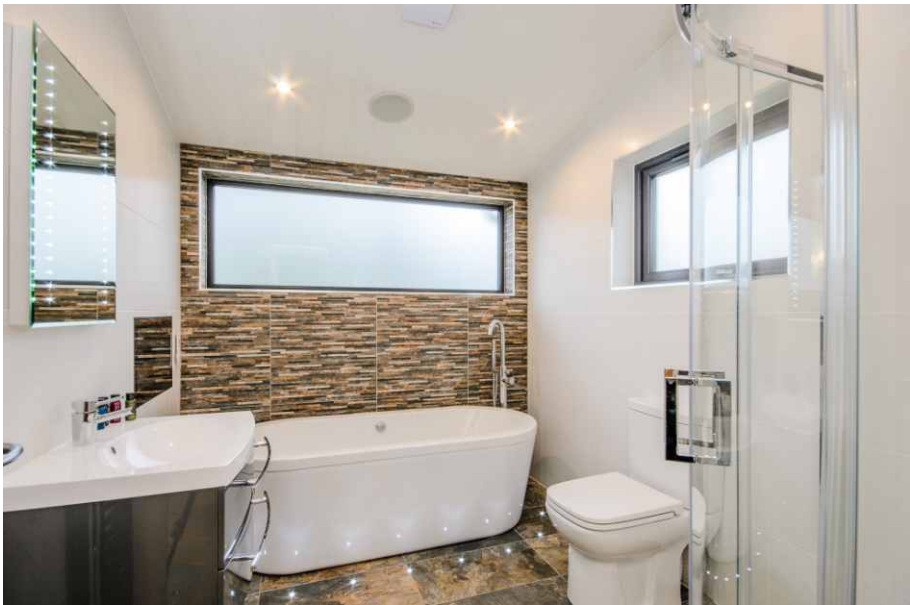
The kitchen is a dream. Two-tone, high gloss units provide plenty of storage and work space and it is equipped with a comprehensive range of appliances including eye level oven and microwave, integrated dishwasher and even a wine cooler.

Clever LED lighting creates the impression that kitchen units are 'floating' and provides gentle zoned light at evening time.

The washing machine is housed separately in a convenient and useful 'Boot' room, which also has space for your vacuum cleaner, ironing board and other household essentials.

The 'tour de force' of the Glade lodges is the bathroom where you will find a freestanding bath, surrounded and highlighted by twinkling LED lights, along with a separate shower cubicle with Mira dual head shower.

As a final touch of decadence and luxury, we even include a bathroom TV. In the 1-bedroom lodge you will also find a luxurious sauna.



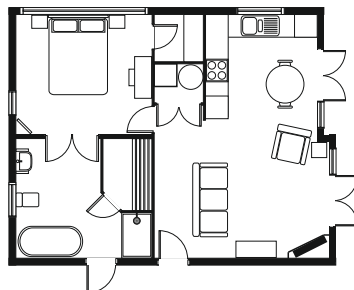
The En Suites have a luxurious large shower enclosure and both rooms offer plenty of storage in stylish vanity units. Illuminated mirrors with integrated shaver sockets add a practical touch.



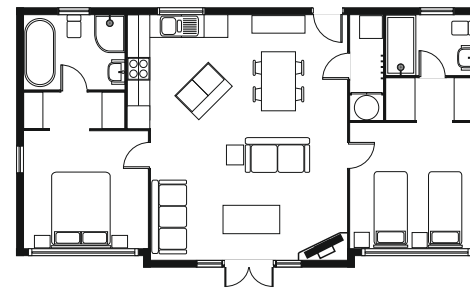


Bedrooms are an oasis of calm. Attractive timber headboards lend warmth and interest to the rooms.

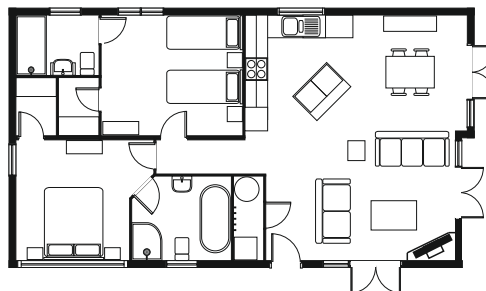
Walk in wardrobes provide generous storage space and full length mirrors.



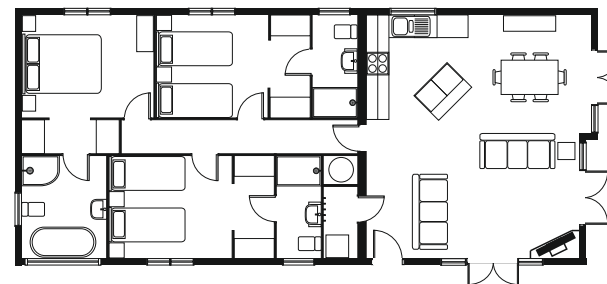
1 Bed, 1 bath with Sauna  
28' x 22' / 8.5m x 6.8m



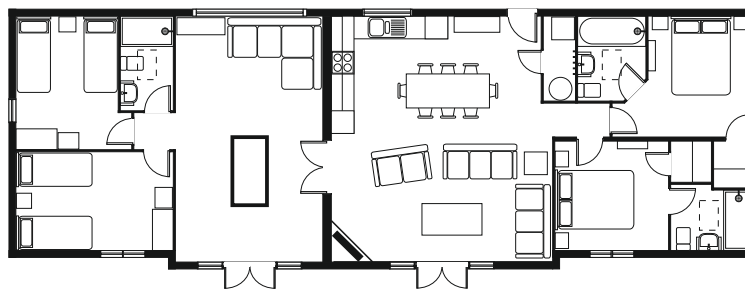
2 Bed, 2 bath Central Living  
40' x 22' / 12.2m x 6.8m



2 Bed, 2 bath End Living  
40' x 22' / 12.2m x 6.8m



3 Bed, 3 bath  
50' x 22' / 15.3m x 6.8m



4 Bed, 3 bath  
65' x 22' / 20m x 6.8m



Pinelog Limited, Riverside Business Park,  
Bakewell, Derbyshire DE45 1GS  
Tel: 01629 814481 Fax: 01629 814634  
email: admin@pinelog.co.uk www.pinelog.co.uk