



Woodsmen Pinelodges



The main external feature of the Woodsman lodge is its chunky waney edge larch cladding. This beautiful and enduring timber is left unstained so that it will weather naturally and mature beautifully.

Windows and doors are deliberately kept simple in design to complement the 'homespun' feel and are finished in a neutral grey paint that will keep on looking good as the lodge naturally mellows to a soft silver hue over the years.

The design of the Woodman Pinelodge originally evolved from a client who wanted a lodge that had a very natural 'cabin in the woods' feel.

The result is a lodge which has a totally unique place in the market. Quirky and original this lodge is a real talking point and absolutely on trend for today's eco-conscious consumer.





The natural theme is continued inside the lodge with timber walls that you would expect in a log cabin. Internal walls are all finished with a UV retardant varnish to limit colour change over time.

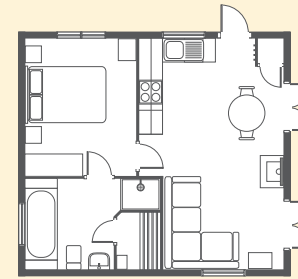
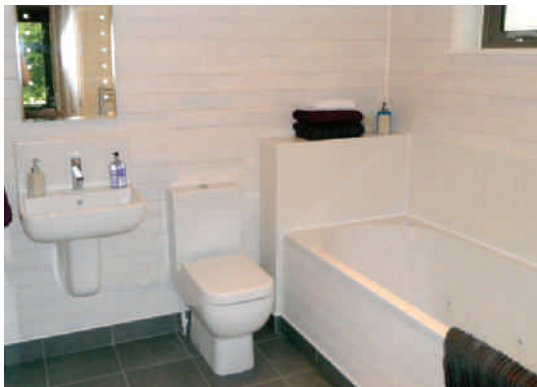
A feature of this lodge is the attractive structural timber floor. The floor has a Hardwax Oil finish which means that its beautiful looks are easy to maintain.



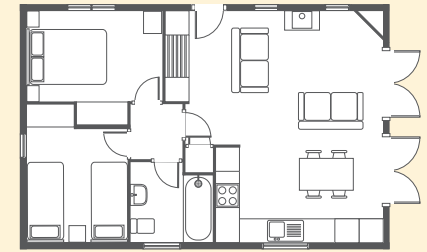
Cosy as it undoubtedly is, the Woodsman lodge has all the modern conveniences you would expect including a well planned kitchen. Larger models have a delightful island unit designed to house a fridge and freezer. A washing machine and dishwasher are also catered for and there is plenty of storage space in the generous number of cupboards and drawers.



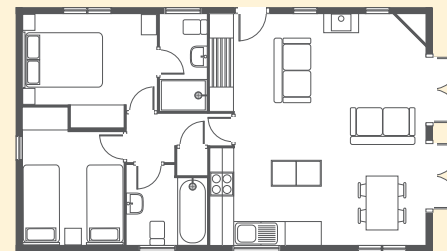
Bathrooms and en-suites in this range of Pinelodges have been thoughtfully designed and feature a double ended bath, thermostatic showers and contemporary sanitary ware with simple and pleasing lines. Wherever possible we strive to use water saving fittings.



1 Bedroom lodge - 22 x 20 ft (6.8 x 6.1 m)



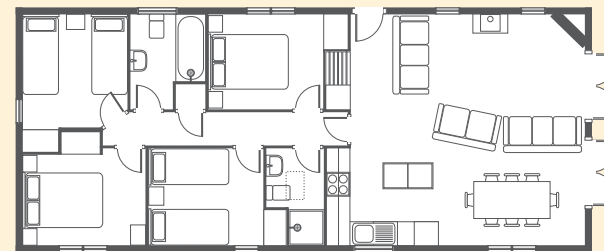
2 Bedroom, 1 Bathroom lodge - 30 x 20 ft (9.2 x 6.1 m)



2 Bedroom, 2 Bathroom lodge - 34 x 20 ft (10.5 x 6.1 m)



3 Bedroom, 2 Bathroom lodge - 40 x 20 ft (12.3 x 6.1 m)



4 Bedroom, 2 Bathroom lodge - 47 x 20 ft (14.4 x 6.1 m)

With superb levels of insulation well in excess of the requirements of BS3632, our use of natural timber, great build quality and attention to detail, low energy lighting and energy saving appliances the Woodsman is a genuinely environmentally friendly log cabin.



Pinelogs Limited, Riverside Business Park,
Bakewell, Derbyshire DE45 1GS
Tel: 01629 814481 Fax: 01629 814634
admin@pinelogs.co.uk www.pinelogs.co.uk