

Home Farm Holiday Park, Somerset

Fusion Leisure Centre

With the Fusion Leisure Centre, Pinelog has demonstrated how it can design a building which from an external point of view is very traditional but internally incorporates imaginative architectural features.

The Client

With some 850 tent, caravan, motor home and holiday home pitches, Home Farm Holiday Park near Burnham-on-Sea is one of the largest holiday parks in Somerset. Thanks to the unreliability of the British climate its owners decided to provide added value to visitors by offering year-round leisure facilities, thereby helping to “weatherproof” holidays.

The Brief

A modern leisure centre was required alongside the existing outdoor swimming pool. It would sit into its open parkland setting and for planning purposes, be sympathetic with surrounding buildings. It had to include a large swimming pool and a number of other leisure facilities and be capable of accepting day to day use by large numbers of visitors and private members.

The Specification

Home Farm Holiday Park's Fusion Leisure Centre is a timber frame building which externally is in total harmony with the

surrounding architecture. It provides 860m² of floorspace, distributed over two levels, accommodating at ground level a 15m x 13m L-shaped swimming pool, a children's splash pool with water jets, spa, sauna, steam room, changing facilities, reception with a coffee shop and viewing area.

On a mezzanine floor overlooking the pool is a gymnasium with the latest running, step and rowing machines, a beauty therapy room and store rooms.

The timber frame is clearly expressed internally. The glulam arched roof structure spans wall to wall, providing the necessary space for the various pools and produces a dramatic, airy building which achieves excellent natural lighting through its extensive fenestration. The timber frame and roof are also naturally resistant to the humidity associated with indoor pools.

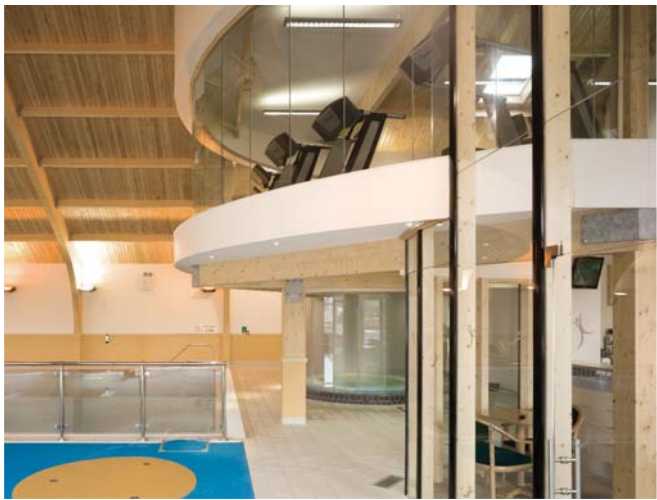
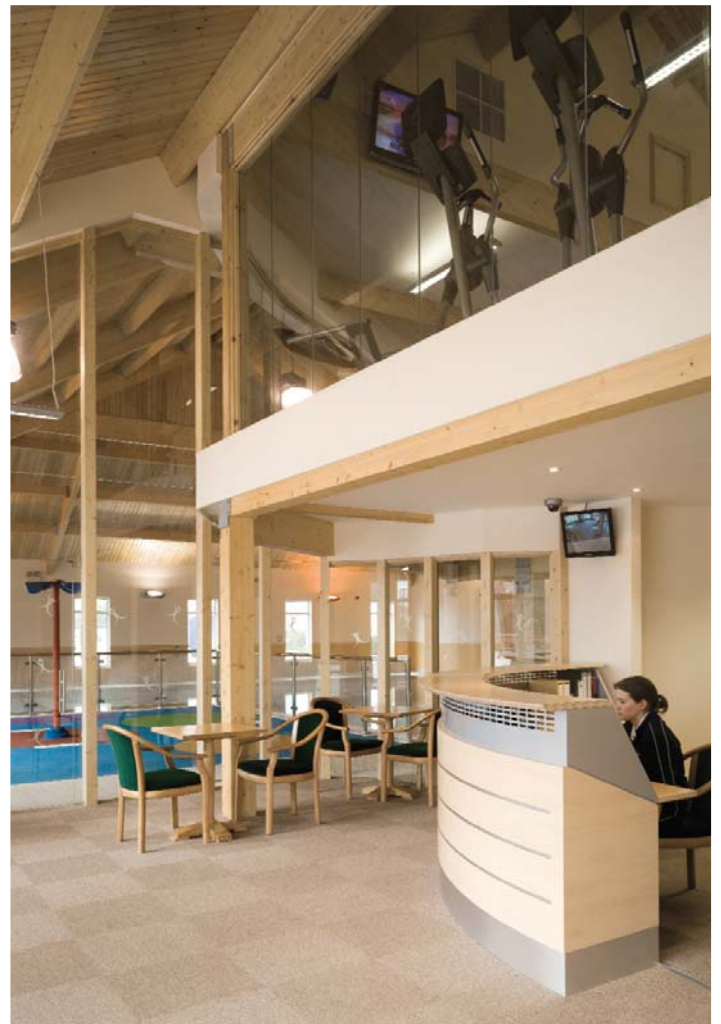
The mezzanine level fitness and beauty therapy suites are supported on elegant timber columns with the gymnasium



having two full-width glass curtain walls. This floor is reached via stairs leading from the changing areas and a disabled lift which gives access to wheelchair users.

A protruding gable entrance leads to a lobby area with seating and the main reception desk. A floor to ceiling glass wall and door between the lobby and the pool mean that staff can monitor users at all times.

The new leisure centre was designed to match the other buildings on the park, its exterior walls are therefore clad with white painted block and render, relieved by red brick piers. It also has a gabled hipped roof with distinctive red clay tiles.





Client Benefits

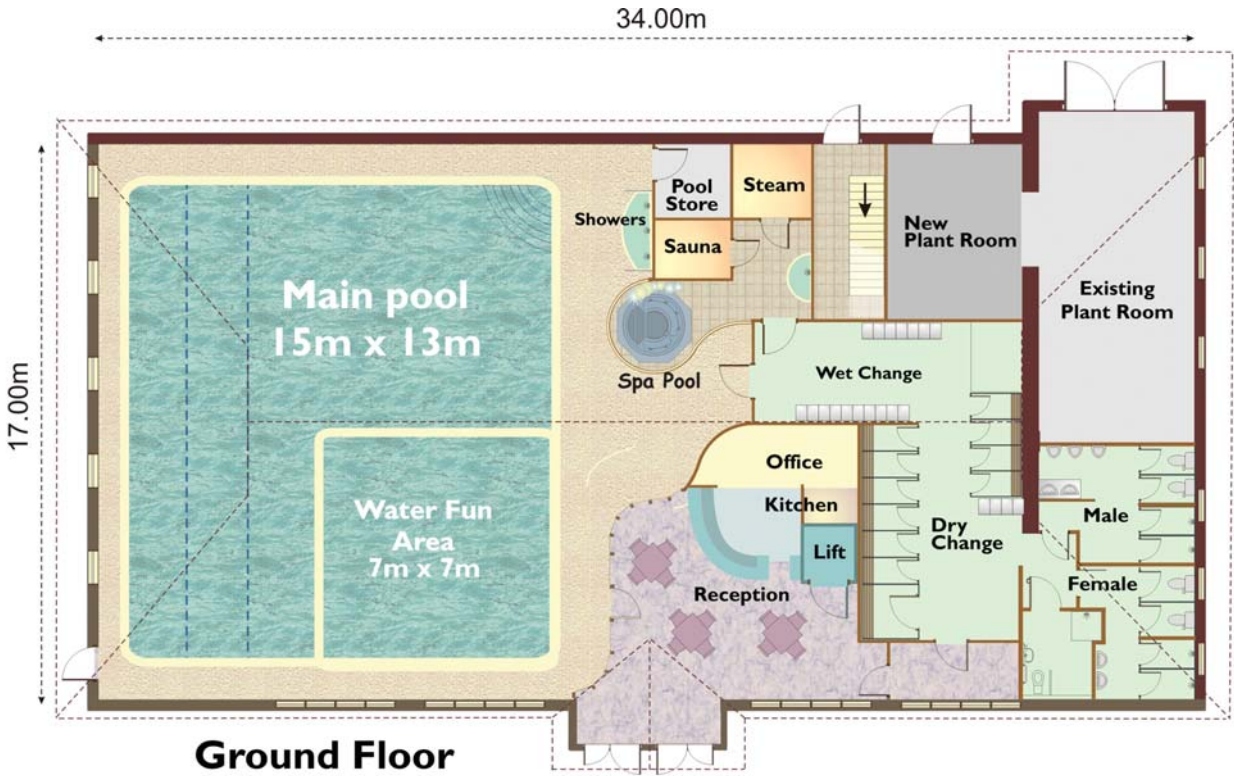
The Fusion Leisure Centre demonstrates how a building, which although looking very traditional from the outside, can still incorporate imaginative architectural features. It is a stunning facility with a pleasant ambience, good natural light and excellent external views – all under a gently contoured light timber ceiling.

Managing Director Geoff Atkinson said: "It is very exciting to have added this impressive leisure centre to the other facilities we offer our customers. We have never had any regrets about our investment and even though it has only been opened a short while, it is having a marked impact on our bookings – particularly in the quieter periods."

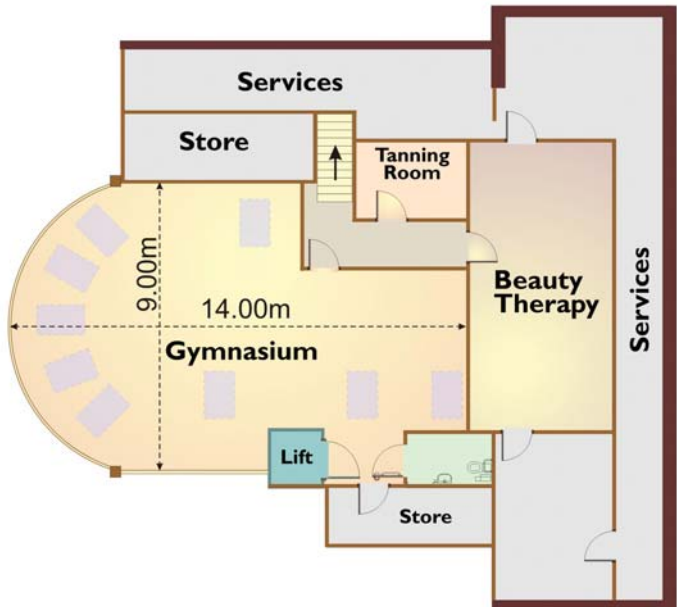
"The centre is not exclusively for holidaymakers though – to improve the financial return on the facility, we saw the opportunity to develop a private members' club for local residents and had over 300 enquiries before we opened!"

Client: Home Farm Holiday Park
Location: Burnham-on-Sea, Somerset

FLOORPLAN



Ground Floor



Upper Floor



Pinelog Limited, Riverside Business Park, Bakewell, Derbyshire DE45 1GS
 Tel: 01629 814481 Fax: 01629 814634
 email: admin@pinelog.co.uk www.pinelog.co.uk