

Silver Bay Holiday Village, Anglesey

Indoor Leisure Centre

Holiday makers on this beautiful park in North Wales can now enjoy indoor leisure facilities second to none.

The Client

Silver Bay Holiday Village is sited within an Area of Outstanding Natural Beauty and has been established for some 50 years, offering private ownership of holiday homes with private access directly to the beach and its own boat park. Some recent development has taken place with the installation of 11 new luxury lodges and the progressive upgrading of pitches from static caravan holiday homes to holiday lodges.

Silver Bay Holiday Village felt that the provision of good quality leisure and all-weather facilities would enable the park to compete in today's highly competitive industry. The park is ideally situated to take advantage of the potential influx of new owners – part of a 'staycation' trend – which will bode well for the future of both the park and the area.

The Brief

Silver Bay Holiday Village visited a number of projects designed and constructed by Pinelog and produced a brief which included an indoor swimming pool, children's pool, separate spa pool, steam room and sauna. They also required a beauty therapy area and café to complement these facilities. The leisure complex will also be opened to local residents on a private membership basis (the planning permission includes a total of 400 outside private members).

Pinelog were chosen to submit a design to the client based on their specialist experience in this field. A design was produced by Pinelog's in-house architects and after being agreed by the client a full planning application was submitted by Pinelog. A formal tendering procedure was then carried out and Pinelog was chosen to carry out the complete project.

The Specification

The leisure building comprises an indoor swimming pool 15m x 8m and a separate children's pool, with spa, steam room and associated changing room facilities and plant room. There is also a beauty therapy area with ancillary reception, a cafeteria and main reception, with kitchenette, lobby and staff office. An upper gallery in the roof space, above the changing areas provides a fitness suite and aerobics/multipurpose room, with male/female/disabled WCs.

The roof sweeps and curves to emulate the sand dunes behind the new building. The south west elevations of the pool hall and cafeteria have curved fully glazed walls to allow natural light in as well as provide far reaching views to the coast. The external walls are clad in white render with local stone used on some feature walls to the pool hall and used to form a plinth around part of the walls. Upper storey walls are clad in European Larch, which will be allowed to weather naturally to a silver grey. Doors and windows are in powder coated (grey) aluminium.

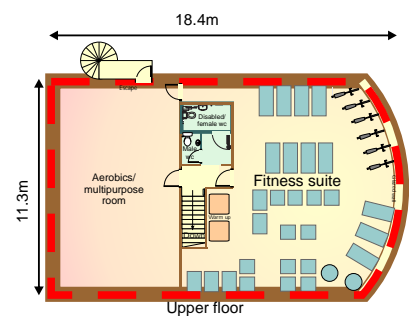
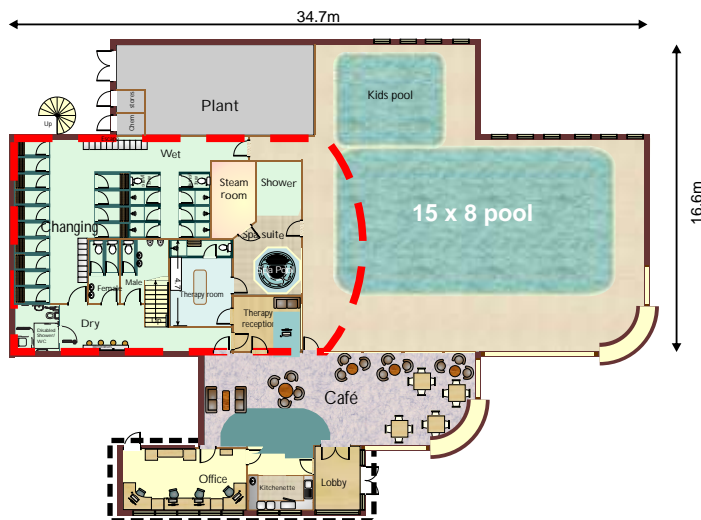


The roof covering is Trocal, in a slate grey colour, which gives the appearance of a seamed lead material. The principal wall construction materials are timber frame supported by glulam timber beams which provide both the vertical wall leg and the curved roof of the structure. All materials are sourced from sustainable sources and are FSC and BM TRADA sourced wherever possible.

Client: Silver Bay Holiday Park
 Location: Anglesey, North Wales



FLOORPLAN



Pinelog Limited, Riverside Business Park, Bakewell, Derbyshire DE45 1GS
 Tel: 01629 814481 Fax: 01629 814634
 email: admin@pinelog.co.uk www.pinelog.co.uk