



Peveril Pinelodge

37' x 20'

3 bed, 2 bath

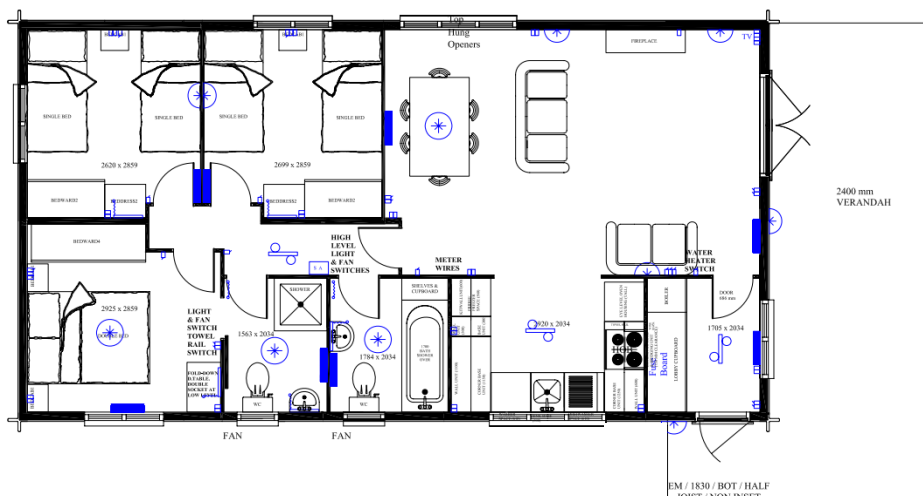
37ft x 20ft Sleeps 6 – DFA2 LH

- One double bedroom with 4'6" bed fitted wardrobe & TV point.
- En-suite shower room with dual access doors.
- 2 x twin bedrooms with 3' beds with fitted wardrobe and desk/dressing table.
- Kitchen with freestanding fridge/freezer, dishwasher, electric oven, ceramic hob & washing machine.
- Open plan living & dining area.
- Bathroom with 3-piece bathroom suite & shower over bath.
- All electric (min of 63amp supply required, 80amp supply recommended)
- Water heating via immersion cylinder
- Electric panel heaters throughout.

Complies with the definition of a mobile home. Ideal for “granny annexe” or holiday let.

Priced at **£39,975** inc VAT (including all fittings and furnishings, veranda, skirting and steps. Excluding delivery and installation)

Please call Sales on 01246 942842, or email sales@pinelog.co.uk for further information on available lodges.





Entrance Hall

Featuring fitted storage cupboards and window.

Open Plan Living

Featuring double doors, fireplace, tall feature window and large dining area.

Kitchen

Incorporating an integrated oven, ceramic hob, sink unit and space for a freestanding fridge/ freezer, dishwasher and washing machine.

Master Bedroom

With fitted wardrobes and dressing table.

En-suite Shower Room with dual access

Fitted with three piece bathroom suite comprising sink, toilet and shower.

Twin Bedroom 1

With fitted wardrobe and dressing table.

Twin Bedroom 2

With fitted wardrobe and dressing table.

Bathroom

Fitted with a three piece bathroom suite comprising sink, toilet and panelled bath with shower over.

