



Skyline Pinelodge

38' x 20'

3 bed, 2 bath

38ft x 20ft Sleeps 6 – SB62 LH

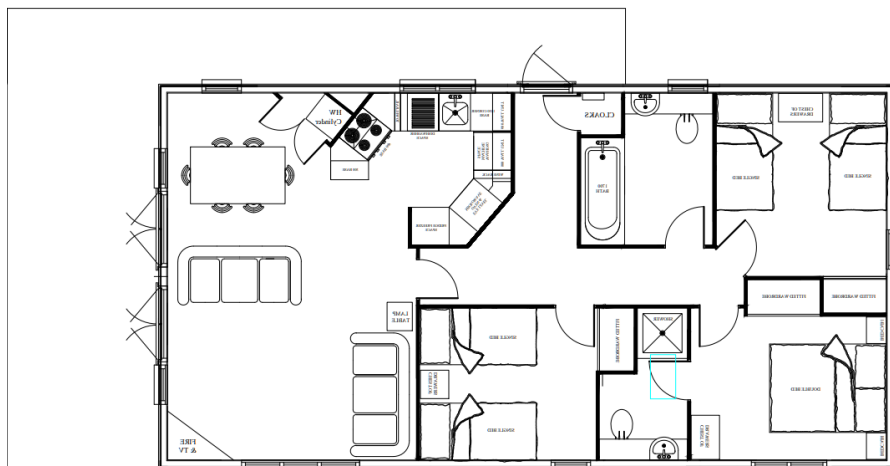
- One double bedroom with 4'6" bed fitted wardrobe & TV point.
- En-suite shower room.
- 2 x twin bedrooms with 3' beds & fitted wardrobe.
- Kitchen with fridge/freezer, dishwasher, electric oven, microwave, ceramic hob & washing machine.
- Open plan living & dining area.
- Bathroom with fitted furniture, 3 piece bathroom suite & shower over bath.
- All electric (min of 63amp supply required, 80amp supply recommended)
- Water heating via immersion cylinder
- Space heating via electric panel heaters.

Complies with the definition of a mobile home and manufactured to BS3632:2005. Ideal for “granny annexe” or holiday let.

Offer price **£47,975** ~~£51,750~~ inc VAT* (including all fittings and furnishings, verandah, skirting and steps. Excluding delivery and installation)

Please call Sales on 01246 942842, or email sales@pinelog.co.uk for further information on available lodges.

*The fitted lodge is zero rated for VAT. VAT will apply to the residual value of the appliances and furniture only.





Please note these photos are representative