



Horizon Pinelodge

40' x 22'

2 bedroom

40ft x 22ft Sleeps 4 – DFM1

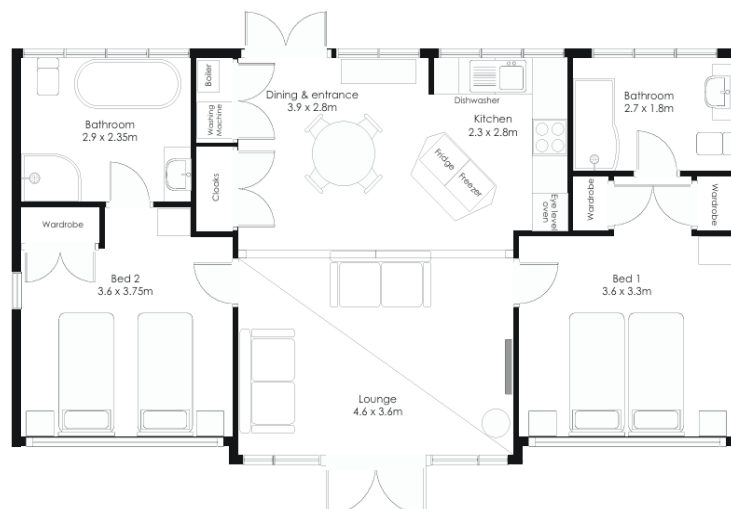
- One double bedroom with kingsize bed, panoramic window and TV point.
- One twin bedroom with 3' beds, panoramic window and TV point.
- Kitchen with fridge/freezer, dishwasher, washing machine, electric oven, microwave & ceramic hob
- Open plan living & dining area with wall of glazed units flooding the living space with natural light.
- Thermaskirt heating throughout with under floor heating to en-suite bathrooms. Electric stove in the lounge.
- En suite bathroom to Master bedroom with suite including twin vanity sinks, walk-in shower, toilet and traditional style heated towel rail.
- En suite bathroom to Twin bedroom with freestanding bath, walk-in shower, sink with vanity and heated towel rail.
- All electric (min of 63amp supply required, 80amp supply recommended).
- Water heating via immersion cylinder.

Complies with the definition of a mobile home and manufactured to BS3632:2005. Ideal for a modern holiday let.

Offer Price £59,975 ~~£63,975~~ inc VAT* (including all fittings and furnishings, veranda, skirting and steps. Excluding delivery and installation)

Please call Sales on **01246 942842**, or email sales@pinelog.co.uk for further information on available lodges.

*The fitted lodge is zero rated for VAT. VAT will apply to the residual value of the appliances and furniture only.





Open Plan Living & Dining Space

If you are looking for a spacious lodge with a modern cosy feel and great for entertaining guests, then this is the lodge for you. With its open kitchen and island looking out to the large dining area and beyond to the spacious lounge, this space is ideal. The lounge area features double doors with glazed side lights spanning the full wall of the lounge which drenches it in natural light whilst the corner fire ensures it retains its cosy feel.

The dining area is light and bright and is complimented by a span of mirrored storage units housing the heating cylinder in one, full cloakroom storage and an end utility space housing the washing machine.

The kitchen features an integrated oven, ceramic hob with extractor over, integrated microwave and dishwasher as well as an abundance of units. The kitchen island has an overhang for additional bar stool seating/ dining if required.

The beautiful beams featured throughout the lodge with their asymmetric design really make this lodge a unique offering and are complimented by the natural wooden flooring throughout.





Master Bedroom with En-suite

This beautiful master features a full panoramic window to really make the most of the outside and is complimented by a stylish full height side window. The bed head is just exquisite with vertical wooden panels spanning the length of the wall incorporating bedside lighting. The master bedroom has an abundance of storage space with one fully shelved deep storage cupboard, ideal for linen and towels, and one fitted with rails for clothing and shoe storage.

The master bedroom is complimented by a fully tiled en-suite shower room with twin vanity sinks, walk-in shower, toilet and traditional style heated towel rail. The shower room also features underfloor heating.





Twin Bedroom with En-suite

Rarely do you find such a large twin bedroom as this. With its panoramic and full height windows this room is both versatile and bright. The room features a full length vertical wooden headboard area with built in bedside lamps, an ample storage cupboard/ wardrobe with double doors and wooden flooring throughout. The en-suite bathroom features a vanity sink with mixer tap, freestanding bath, toilet, walk-in shower and heated towel rail. The bathroom is fully tiled throughout with underfloor heating and a wealth of natural light through its bank of windows to one full wall.

External

The lodge comes complete with the large veranda accessed via the double doors leading from the lounge area and is complete with glass panelled balustrade. The glazed entrance door is accessed by steps with handrail, and the lodge comes complete with skirting.

